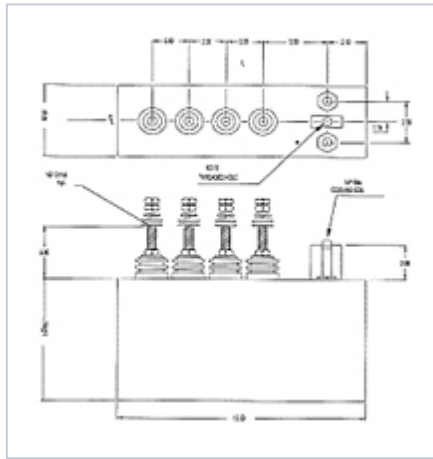


## AR Series Water-Cooled Oil-Filled Caps

- High capacitance at high power
- 6 to 1400  $\mu\text{F}$  capacitance
- 800 to 1250  $V_{\text{RMS}}$
- 240 to 2000  $A_{\text{RMS}}$
- 300 to 2000 kVA
- Up to 25 kHz
- One Year Warranty



Part Number	Total Capacitance	Capacitance By Tap	$V_{\text{MAX}}(\text{RMS})$	$S_{\text{MAX}}$	$I_{\text{MAX}}(\text{RMS})$
<u>ARS18</u>	750 $\mu\text{F}$	4 x 187.5 $\mu\text{F}$	900 V	N/A	1000 A
<u>ARS19</u>	1400 $\mu\text{F}$	4 x 350 $\mu\text{F}$	750 V	N/A	1000 A
<u>AR482</u>	10.18 $\mu\text{F}$	1.45 + 2.91 + 5.82 $\mu\text{F}$	1250 V	300 $\text{kV}\cdot\text{A}$	240 A
<u>AR499</u>	24.87 $\mu\text{F}$	1.31 + 2.62 + 5.24 + 2 x 7.85 $\mu\text{F}$	800 V	300 $\text{kV}\cdot\text{A}$	375 A
<u>AR488</u>	37.34 $\mu\text{F}$	1.96 + 3.93 + 7.85 + 2 x 11.8 $\mu\text{F}$	800 V	450 $\text{kV}\cdot\text{A}$	563 A
<u>AR485</u>	74.60 $\mu\text{F}$	4 x 18.65 $\mu\text{F}$	800 V	900 $\text{kV}\cdot\text{A}$	1125 A
<u>AR487</u>	63.65 $\mu\text{F}$	5 x 12.73 $\mu\text{F}$	1000 V	1200 $\text{kV}\cdot\text{A}$	1200 A

<u>Part Number</u>	<u>Total Capacitance</u>	<u>Capacitance By Tap</u>	<u>V<sub>MAX</sub> (RMS)</u>	<u>S<sub>MAX</sub></u>	<u>I<sub>MAX</sub> (RMS)</u>
<u>AR496</u>	40.80 µF	4 x 3.4 + 4 x 6.8 µF	1250 V	1200 kV·A	960 A
<u>AR481</u>	7.77 µF	2 x 0.78 + 1.55 + 2 x 2.33 µF	800 V	300 kV·A	375 A
<u>AR490</u>	11.72 µF	0.26 + 0.52 + 1.04 + 2.1 + 2 x 3.9 µF	800 V	450 kV·A	563 A
<u>AR492</u>	17.48 µF	4 x 4.37 µF	800 V	675 kV·A	844 A
<u>AR486</u>	19.92 µF	6 x 3.32 µF	1000 V	1200 kV·A	1200 A
<u>AR495</u>	31.10 µF	5 x 6.22 µF	800 V	1200 kV·A	1500 A
<u>AR498</u>	13.40 µF	2 x 1.34 + 4 x 2.68 µF	1250 V	1260 kV·A	1008 A
<u>AR500</u>	15.54 µF	2 x 1.55 + 4 x 3.11 µF	1200 V	1350 kV·A	1125 A
<u>AR493</u>	19.88 µF	4 x 4.97 µF	800 V	800 kV·A	1100 A
<u>AR497</u>	13.26 µF	2 x 1.33 + 4 x 2.65 µF	1200 V	1200 kV·A	1000 A
<u>AR483</u>	31.08 µF	6 x 5.18 µF	800 V	1250 kV·A	1563 A
<u>AR489</u>	39.90 µF	1.9 + 3.8 + 6 x 5.7 µF	800 V	1600 kV·A	2000 A
<u>AR484</u>	6.0 µF	6 x 1 µF	800 V	603 kV·A	754 A
<u>AR491</u>	4.92 µF	6 x 0.82 µF	1250 V	1200 kV·A	960 A
<u>AR CUSTOM</u>	N/A	N/A	N/A	N/A	N/A