

Defibrillator Capacitors

FILM CAPACITORS FOR EXTERNAL DEFIBRILLATOR APPLICATIONS



Aerovox defibrillator capacitors are designed specifically to meet the reliability demands of a Class III medical device. In fact, leading medical device manufacturers choose Aerovox because they can count on 100% field reliability when it really matters.

These capacitors are housed in round or oval metal, oil-filled cases; or in a dry, epoxy-filled plastic housing version. Plastic cases offer excellent design flexibility, and can be customized to specific requirements. They are available in voltage ranges from 800 VDC to 6,000 VDC, delivering in excess of 500 joules at full charge.

Applications

- External Defibrillator
- Pulse Power Applications

Highlights

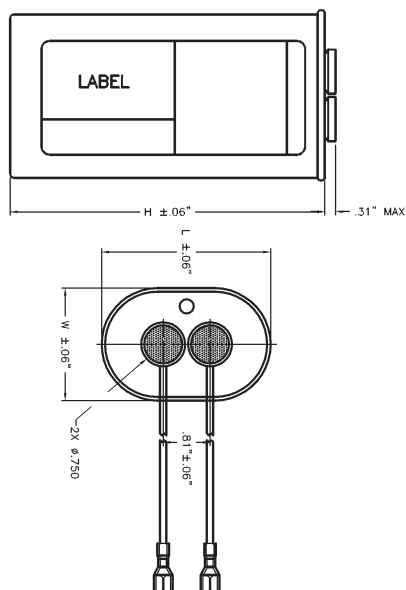
- Aluminum, steel or plastic case options
- Round and oval designs
- Available with wire harness
- High energy density
- Monophasic or bi-phasic designs
- Custom designs available
- RoHS compliant

Specifications

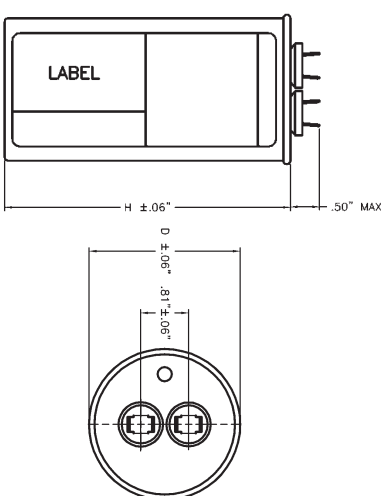
Capacitance Range:	32 to 500 μ F
Capacitance Tolerance:	$\pm 5\%$ Standard
DC Voltage Range:	800 VDC to 6,000 VDC

Outline Drawings

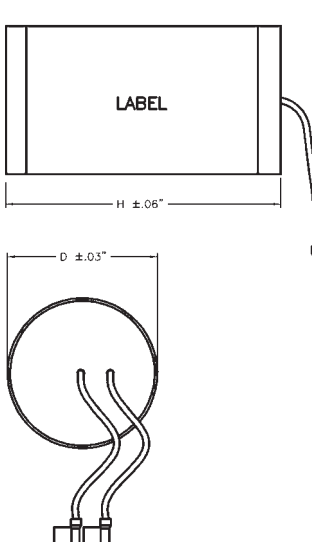
Metal – Oval



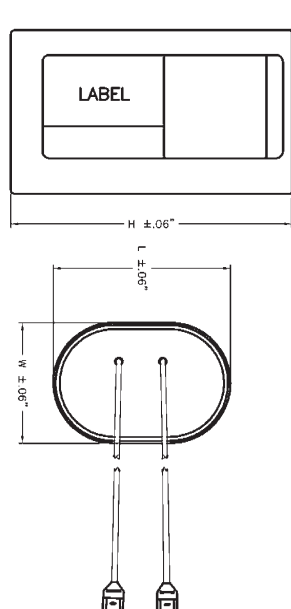
Metal – Round



Plastic – Round



Plastic – Oval

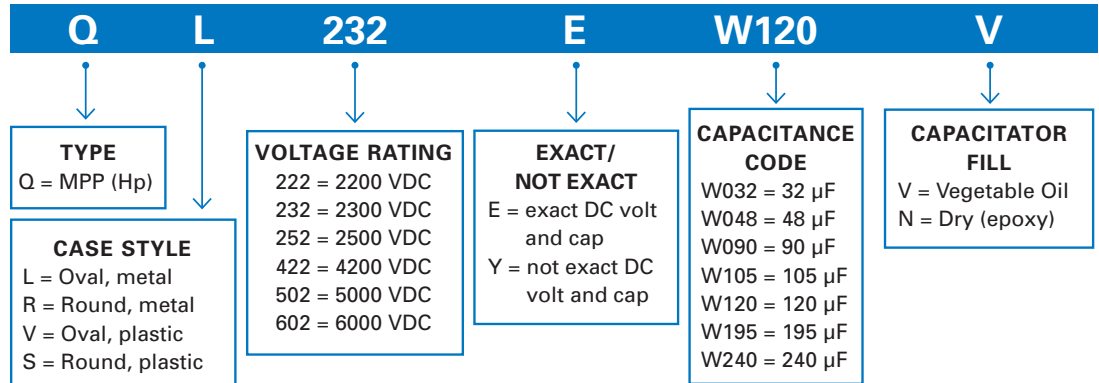


Defibrillator Capacitors

FILM CAPACITORS FOR EXTERNAL DEFIBRILLATOR APPLICATIONS

Part Numbering System

Aerovox's part numbering system is a descriptive part number made up of several different components such as case style, voltage rating, etc. The descriptors are explained using QL232EW120V as a representative part number:



CAP (µF)	AEROVOX P/N	VOLTAGE RATING (VDC)	JOULES (J)	STYLE (FILL)	SIZE W x L x H OR D x H (Inches)
120	QL232EW120V	2300	317	Oval, Metal (Oil)	1.91 x 2.91 x 3.75
32	QL502EW032V	5000	400	Oval, Metal (Oil)	1.91 x 2.91 x 6.75
48	QL422YW048V	4200	423	Oval, Metal (Oil)	1.91 x 2.91 x 5.75
195	QL232EW195V	2300	516	Oval, Metal (Oil)	1.91 x 2.91 x 5.75
195	QV232EW195N	2300	516	Oval, Plastic (Dry)	1.77 x 2.75 x 5.75
32	QL602EW032V	6000	576	Oval, Metal (Oil)	1.97 x 3.66 x 6.88
240	QL232EW240V	2300	635	Oval, Metal (Oil)	1.97 x 3.66 x 5.88
105	QR172YW105V	1760	163	Round, Metal (Oil)	1.88 x 4.75
105	QR222EW105V	2200	254	Round, Metal (Oil)	2.13 x 4.75
90	QR252EW090V	2500	281	Round, Metal (Oil)	2.63 x 4.75
195	QR222EW195V	2200	472	Round, Metal (Oil)	2.63 x 4.75
195	QS222EW195N	2200	472	Round, Plastic (Dry)	2.57 x 4.69
195	QR232EW195V	2300	516	Round, Metal (Oil)	2.38 x 5.60



High Voltage Products. High Voltage Experts.



manufacturers a line of standard and custom capacitors for defibrillator applications. Voltages range from 2000 Volts to 7500 Volts with currents as high as 400 amps peak on some designs.

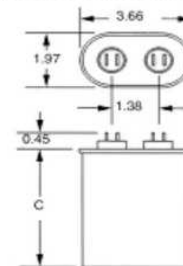
Our defibrillator capacitors are manufactured with the latest technology and highest quality films. Our production control allows customers to specify their own test requirements. All units if required can be traceable for "batch to batch" conformity tracking.

CSI often preforms qualification testing of new custom defibrillator capacitors to insure design verification integrity.

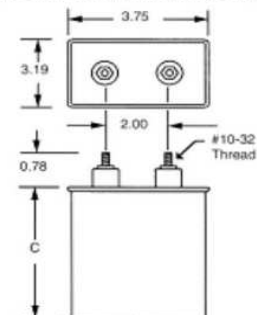
Potential customers are welcomed to fill out an "RFQ Form" for a quotation on their application. More standard models are shown below

VOLTS	uF	PART NUMBER	CASE TYPE	HEIGHT C		ENERGY
				ins	mm	(Joules)
Metallized Electrodes						
5,200	36	5R156T	CT03	6.75	172	487
5,500	32	5R150T	CT03	6.75	172	484
5,800	27	5R199T	CT03	6.75	172	454
Foil Electrodes						
6,000	28	6W500TN	CT17	6.88	175	504
6,000	30	6W664TN	CT17	6.88	175	540
6,000	30	6W532T	CT17	6.88	175	540
6,000	32	6W689TN	CT17	6.88	175	576
7,500	16	7W572TN	CT17	6.88	175	450

Case Type CT03 (with Terminal Type T)



Case Type CT17 (with Terminal Type TN)



TERMINALS

Terminal options (indicated by Part Number suffix) are:

- T** 0.25" (6.4 mm) quick connect blades
- TN** Ceramic bushings with #10-32 threaded studs
- TW** HV insulated 18 gauge wire leads