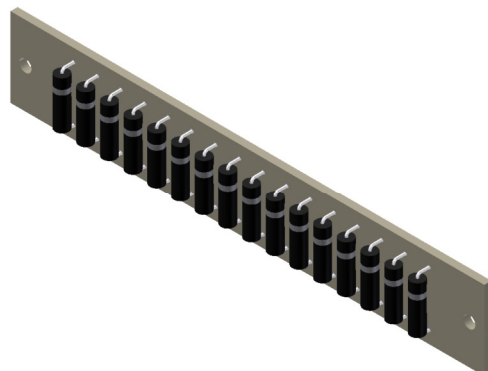




## Features

- High voltage, medium current handling assembly
- Assembled with RoHS compliant materials
- Diodes are RoHS compliant to Directive 2011/65/EC, Article 4(1), Annex II; Annex III, 7(a)



## Device Electrical Characteristics

( 25°C ambient temperature unless stated otherwise)

	Conditions	Symbol	Value
Maximum Repetitive Peak Reverse Voltage	Note 1	$V_{RRM}$	200,000 Volts
Average Forward Current Maximum	$T_{OIL} = 55^{\circ}\text{C}$	$I_{FAVM}$	220 mA
Maximum Forward Voltage Drop Per Leg	$I_F = 220 \text{ mA}$	$V_F$	256 Volts
Maximum Reverse Current	$V_R = V_{RRM}$	$I_R$	2 $\mu\text{A}$
Maximum Surge Current rating	8.3 msec, $\frac{1}{2}$ sinewave	$I_{FSM}$	20 Amps
Maximum Junction Temperature		$T_J$	125°C
Storage Temperature Range		$T_{STG}$	-55°C to 150°C

Note 1: To achieve rated current and voltage, entire assembly must be submerged in Shell Diala AX electrical insulating oil or equivalent.

