



High Voltage Products. High Voltage Experts.

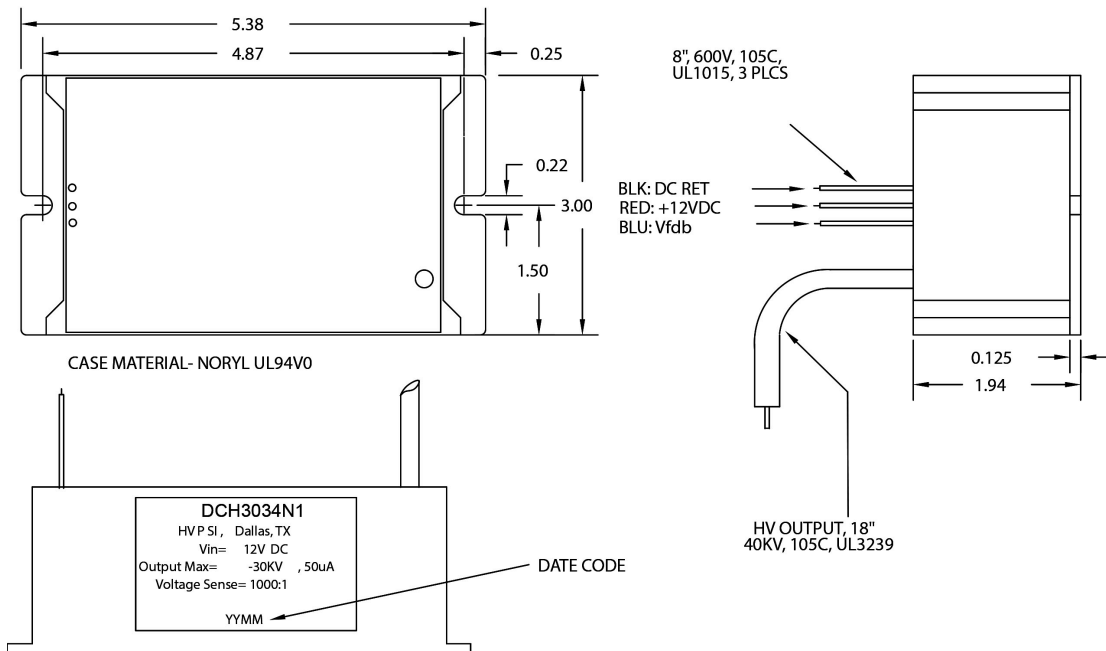
DCH3034 Series

Input-Output Proportional 0 to 30kV
DC-DC High Voltage Power Supply

- 0 to 12VDC Input voltage
- 1000:1 Feedback Voltage Divider (matched for 10MΩ)
- Zero to Full Output
- Positive and Negative Models
- Up to 50uA Output Current
- Short-circuit Protection
- Rugged, encapsulated module
- Low EMI Sine-wave topology
- Low ripple
- Noryl Enclosure
- Mounting Flange



| | Conditions | Value | Units |
|--------------------------------|--------------------------------|------------|----------|
| Input | | | |
| Input Voltage | All Versions | 0 to 12 | VDC |
| Power | At Max load | 2 | W |
| Output | | | |
| Voltages Available | Primary Output | ±30 | kVDC max |
| Voltage Adjustment | Proportional to Input Voltage | 0 to 100% | - |
| Power | Nominal Input, Max Vo | 1.2 | W |
| Current, Primary Output | Nominal Input, Max Vo | 40 | uA |
| Regulation, Primary Vo | Any Static Load, Max Vo | 18% | VDC |
| Ripple | Full Load, Max Vo | <1% | Vp-p |
| Stability | Over 8hr, 30 min warm up | <0.2% | VDC |
| Environmental | | | |
| Operating Temperature | Case Temp, Full Load, Max Vo | 0 to +60 | °C |
| Temperature Coefficient | Over the Operating Temperature | 0.30 | %/°C |
| Storage | Non-Operating, Case Temp | -40 to +85 | °C |
| Humidity | Non-Condensing | 0 to 95% | RH |
| Altitude | Standard Operating Conditions | 0 to 10000 | Feet |



SS

| Part Number | Input Voltage | Output Voltage | Polarity | Output Power | Maximum Output Current |
|-------------|---------------|----------------|----------|--------------|------------------------|
| DCH3034P1 | 0 to 12 VDC | 0 to 30kV | Positive | 1.2 Watts | 40uA |
| DCH3034N1 | 0 to 12 VDC | 0 to -30kV | Negative | 1.2 Watts | 40uA |

Applications:

- Photomultipliers
- Ionizers
- High Voltage Biasing
- CRT Grid Circuits
- Biasing
- Dielectric Testing
- Piezoelectric Drivers
- Electrostatic Chucks
- Sealing Applications
- Ink Jet Printers
- Photo Detectors

Mechanical:

- Dimensions: 5.38" x 3.00" x 1.94"
- Pins: 0.040" Diameter
- Weight: 14.0 Ounces
- Operating Temperature Range: -40°C to +70°C